

For information in regard to Lots at LAKE MILL, call or address either of the undersigned

**S. W. SEXTON**

1115 SHEFFIELD AVENUE

PHONE LAKE VIEW 1579

**J. C. MITCHELL**

2795 NORTH ROBEY STREET

CHICAGO

*Harry M. Huff agt.*

*Gobleville, Mich.*

# A FEW FACTS

ABOUT

**LAKE MILL**

**LAKE**

## Are You Interested

in a site for a summer home? On the shore of a beautiful lake within 100 miles of Chicago, yet out of the track of the Sunday excursionist?

Where you can leave the family through the week assured of their safety and comfort and join them at week-ends.

Where you can enjoy boating, bathing and the very best of fishing.

Where you have all the advantages of the first-class summer resort without the tiresome exacting demands of the fashionable one.

Where you have fruits, vegetables, milk, butter and eggs of a freshness, quality and flavor unknown in the city.

All this in a beautiful, healthful country, among congenial, hospitable neighbors, where you can literally "live on the fat of the land" and for less than it costs you at home.

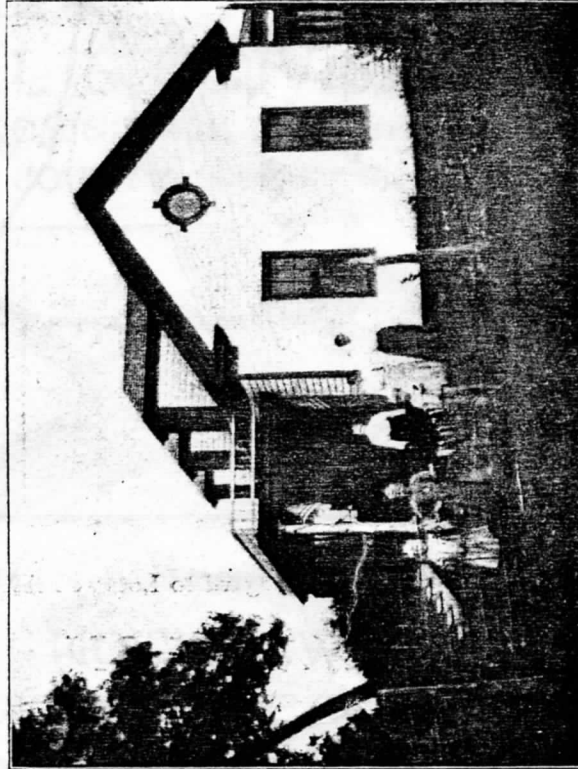
If you are interested in such a place we would like to call your attention to

**Lake Mill Lake** a beautiful sheet of clear water about one and one-fourth miles long and from one-half to three-fourths miles wide, in the Michigan fruit belt, less than two miles from Gobleville and twenty miles east of South Haven.

It lies in a rich country surrounded by fruit, grain and dairy farms where the



A PRETTY BIT OF SHORE



A SUMMER HOME ON THE LAKE

camper or cottager can secure the very best of fruits, vegetables and other country produce at a fraction of the prices charged in the cities.

Its waters are teeming with fish, being stocked annually with game varieties from the state fish hatcheries. The photograph here reproduced tells the tale, "nine black bass weighing 45 pounds caught in one hour." Where can this record be equaled? Many other large catches have made this lake famous as the home of the big bass. While it is an every-day occurrence to see strings of from 50 to 100 of the more common varieties, croppies, perch or blue-gills.

Numerous fine bathing beaches, a steamboat and gasoline launch furnish pastime for those who enjoy them.

Rural routes deliver mail almost at your door.

Good hard roads afford pleasant driving or wheeling.

**Gobleville** is a thriving city of 700 people on the Michigan Central R. R., 20 miles from South Haven (railroad name is Gobles.) It has good business houses where every necessity or luxury can be obtained at reasonable prices.

A lumber yard and planing mill enable one to secure building material at low cost.

The undersigned have recently subdivided a tract of land bordering the Lake shore and are now offering lots for sale to desirable people at very low prices.

## Look at the Map

**Note** the fact that each and every lot has its own lake frontage. Perhaps you are aware that lake frontage in accessible places is becoming scarce and valuable.

**Note** the size of the lots. The depth and width of each one is stated. Some of them are larger than ten average city lots. You are not crowded and have room enough for a garden if you wish.

## As a Summer Home

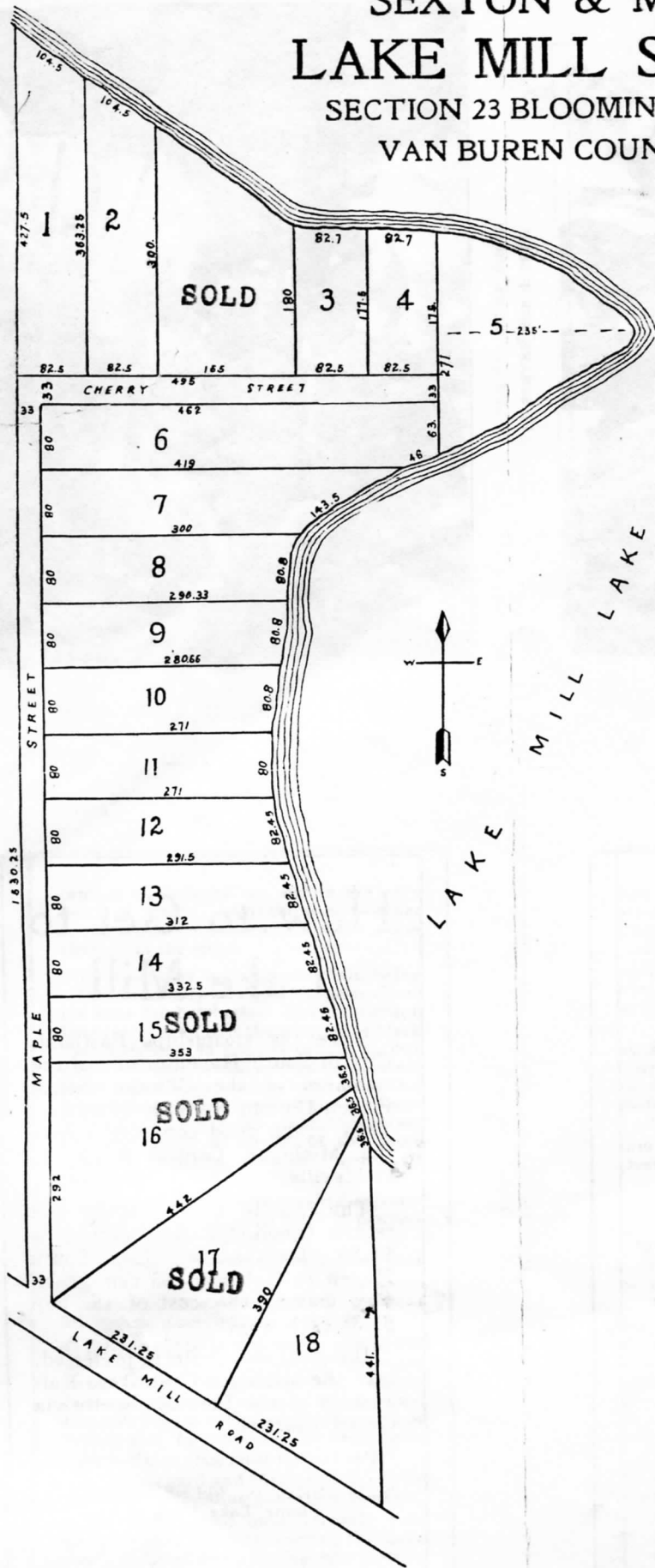
You will find no better surroundings, no better neighbors, no more restful, healthful conditions anywhere. There are no rowdies, no saloons and we will use every precaution to keep this property in the hands of the best people, thus insuring a high class neighborhood.

## As an Investment

**Note** the prices in another column, as will be seen, present prices range from \$2.00 to \$4.00 per foot of lake frontage. Buy one of these lots now, build a cottage on it or use it for camping for a year or two. It will pay interest on your money and 100 per cent profit.

# SEXTON & MITCHELL'S LAKE MILL SUBDIVISION

SECTION 23 BLOOMINGDALE TOWNSHIP  
VAN BUREN COUNTY, MICHIGAN



LOT NUMBER	PRICE
2	\$450.00
3	350.00
4	300.00
5	500.00
6	250.00
7	250.00
8	200.00
9	200.00
10	200.00
11	250.00
13	200.00
14	200.00
15	200.00
16	200.00
18	200.00